

## KS2 Recycling Sort Game Cards

We recommend that these cards are printed, laminated, and cut individually for repeated use.



**envelopes & junk mail**

Recycling Sort



**cardboard boxes  
& tubes**

Recycling Sort



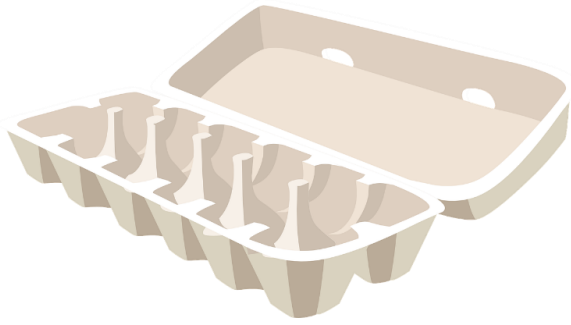
**newspapers**

Recycling Sort



**magazines &  
catalogues**

Recycling Sort



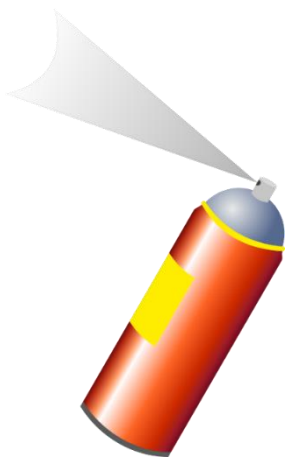
**egg boxes**

Recycling Sort



**drinks cans**

Recycling Sort



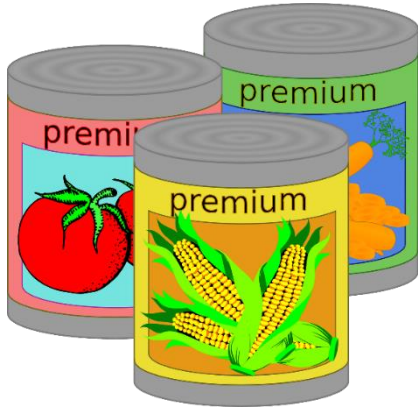
**empty aerosol cans**

Recycling Sort



**cereal boxes &  
cardboard packaging**

Recycling Sort



## food tins

Recycling Sort



## plastic cleaning bottles (no spray trigger nozzles)

Recycling Sort



## margarine tubs (no film, foil, or paper lids)

Recycling Sort



## plastic drinks bottles (keep lids on)

Recycling Sort



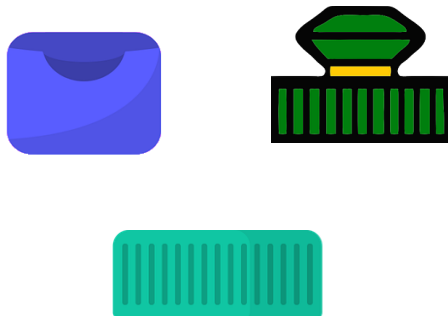
**yoghurt pots**  
(no film or foil lids)

Recycling Sort



**plastic shower gel &  
shampoo bottles**  
(no dispensing pumps)

Recycling Sort



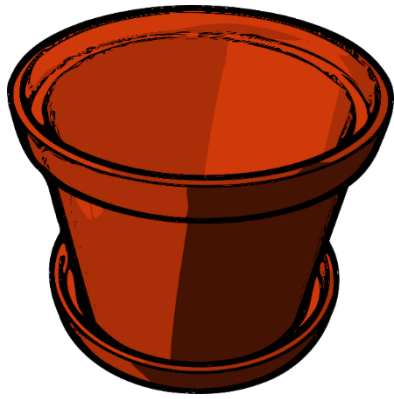
**plastic bottle caps**

Recycling Sort



**plastic bags**

Recycling Sort



**plastic plant pots**

Recycling Sort



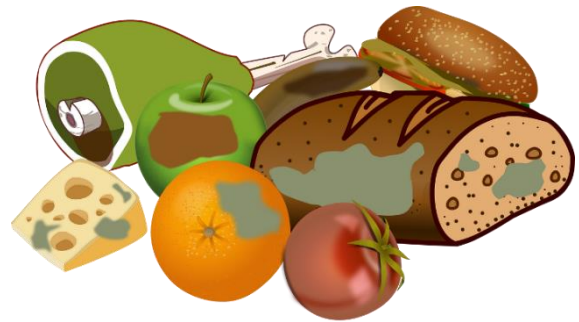
**food pouches**

Recycling Sort



**food & drinks cartons**

Recycling Sort



**food waste &  
vegetable peelings**

Recycling Sort



**polystyrene & bubble  
wrap**

Recycling Sort



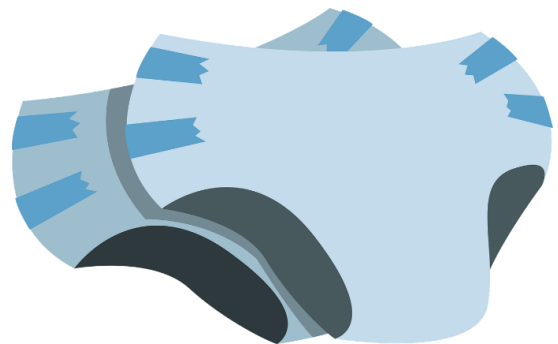
**toys**

Recycling Sort



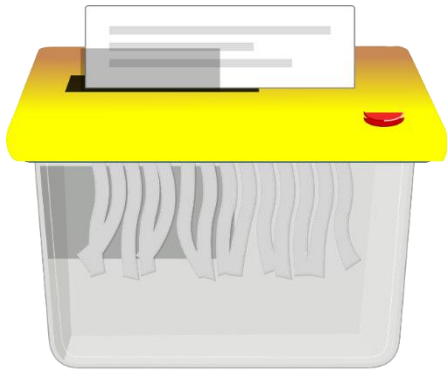
**plastic food trays,  
punnets & containers**

Recycling Sort



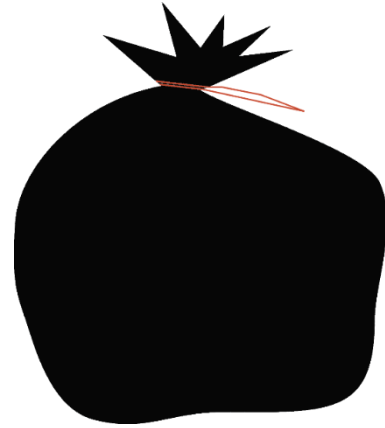
**nappies**

Recycling Sort



**shredded paper**

Recycling Sort



**bin liners**

Recycling Sort



**takeaway packaging**

Recycling Sort



**takeaway cups**

Recycling Sort

Print these character cards and attach it to a card headband for the pupils to wear during the game.

