

Glass Sort Game Cards

We recommend that these cards are printed, laminated, and cut individually for repeated use.

Keep these cards together in a wallet or an envelope labelled 'Glass Sort Game – General Waste Bin'.



glass toiletry jars

(no lids)

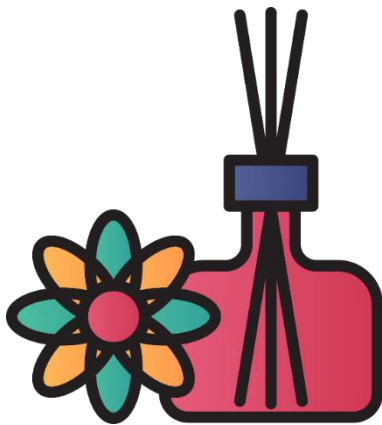
Glass Sort – **General Waste Bin**



glass food jars

(no lids)

Glass Sort – **General Waste Bin**



reed diffuser bottles

(no reeds)

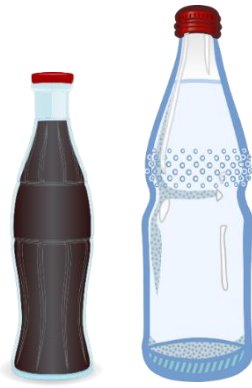
Glass Sort – **General Waste Bin**



perfume bottles

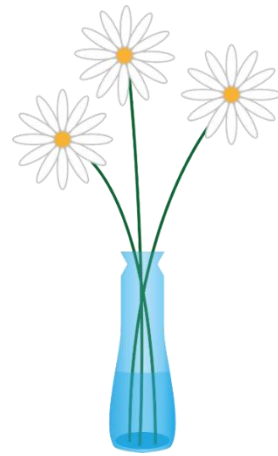
(no lids)

Glass Sort – **General Waste Bin**



glass drink bottles
(no lids)

Glass Sort – **General Waste Bin**



vases

Glass Sort – **General Waste Bin**



drinking glasses

Glass Sort – **General Waste Bin**



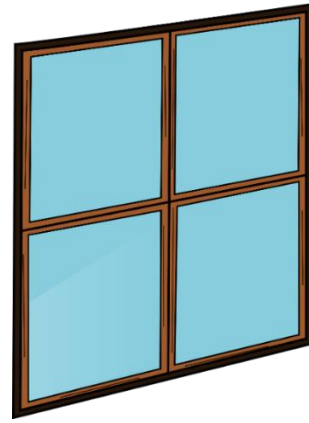
oven-proof glass

Glass Sort – **General Waste Bin**



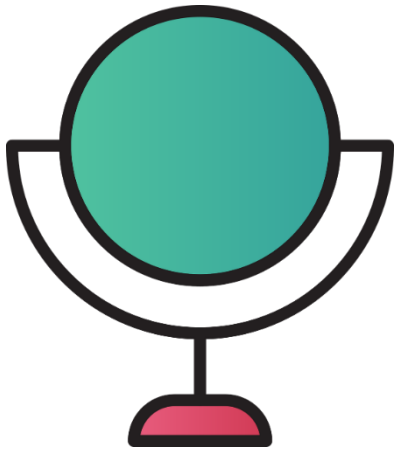
nail varnish bottles

Glass Sort – **General Waste Bin**



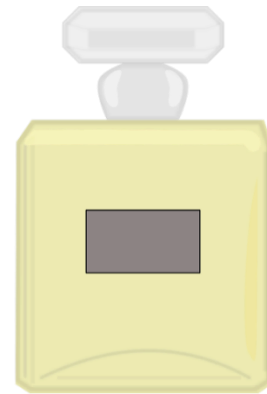
**panes of window
glass**

Glass Sort – **General Waste Bin**



mirrors

Glass Sort – **General Waste Bin**



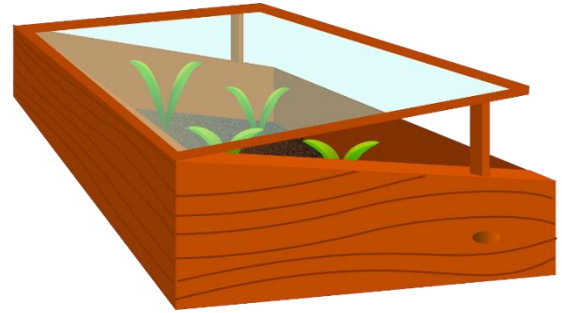
aftershave bottles
(no lids)

Glass Sort – **General Waste Bin**



reading glasses

Glass Sort – **General Waste Bin**



greenhouse glass

Glass Sort – **General Waste Bin**



glass toiletry bottles
(no dispensing pumps)

Glass Sort – **General Waste Bin**

Print this character card and attach it to a card headband for the pupil to wear during the game.

