

PLANNING INQUIRY

CONSTRUCTION OF A SOLAR FARM AND BATTERY STATIONS TOGETHER WITH
ALL ASSOCIATED WORKS, EQUIPMENT AND NECESSARY INFRASTRUCTURE

LPA Reference: 20/01242/FULM

Heritage Proof of Evidence

Appendix 2- View Analysis

on behalf of Newark and Sherwood District Council

Prepared by Adam Partington MSc BA Hons

November 2021

This Appendix provides illustration of key views identified by Locus Consulting during the site visit which form an integral part in the experience of designated heritage assets impacted upon by the proposed development.

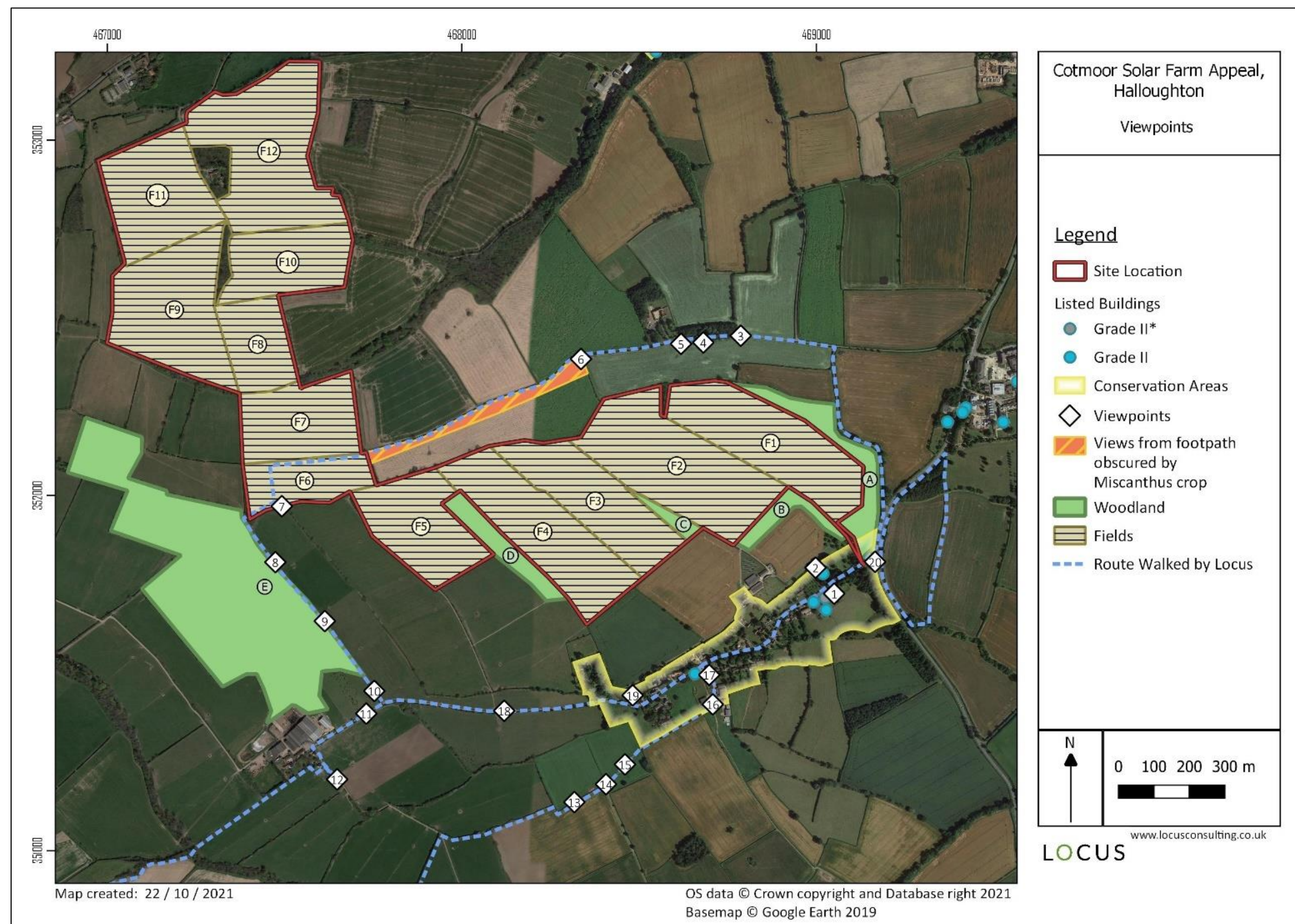


Figure 1: Key views identified by Locus Consulting



Figure 2: View 1 from the 2nd floor of the tower of Halloughton Manor Farm House



Figure 3: View 2 from the northern boundary of the Halloughton Parish Church graveyard



Figure 4: View 3 across the Site from the farmtrack east of Stubbins Farm



Figure 5: View 4 across the Site from the farmtrack east of Stubbins Farm



Figure 6: View 5 across the Site towards Halloughton Conservation Area from the farmtrack east of Stubbins Farm



Figure 7: View 6 towards Brackenhurst Hall from the farmtrack west of Stubbins Farm



Figure 8: View 7 towards Halloughton Conservation Area from the public footpath east of Halloughton Wood



Figure 9: View 8 towards Halloughton Conservation Area from the top of Halloughton Wood



Figure 10: View 9 towards Halloughton Conservation Area from partway up the eastern edge of Halloughton Wood



Figure 11: View 10 towards Halloughton Conservation Area and the Site from the bottom of Halloughton Wood



Figure 12: View 11 towards the Site from the farmtrack leading from Halloughton to Halloughton Wood Farm

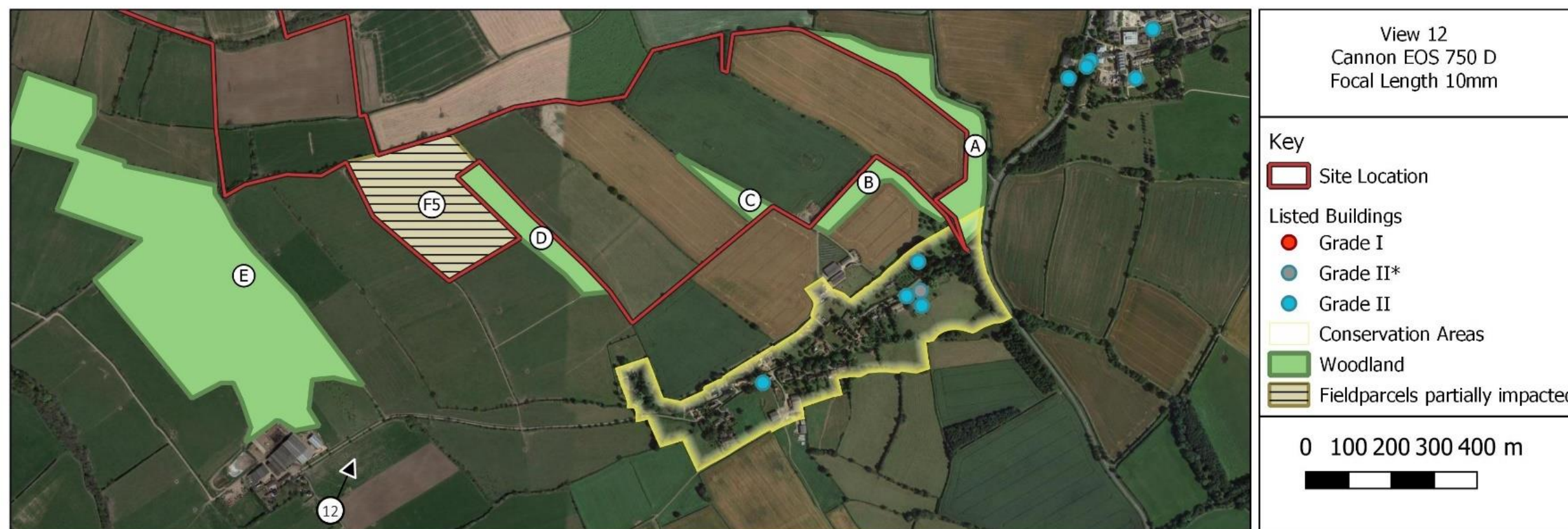


Figure 13: View 12 towards the Site from the farmtrack east of Halloughton Wood Farm



Figure 14: View 13 towards the Site and Halloughton Conservation Area from the Bridleway south of Halloughton (first of three in a sequence of views approaching Halloughton Conservation Area from the southwest)



View 14
Cannon EOS 750 D
Focal Length 10mm

Key

 Site Location

Listed Buildings

● Grade I

● Grade II*

● Grade II

 Conservation Areas

 Woodland

 Field parcels partially impacted

0 100 200 300 400 m



Figure 15: View 14 towards the Site and Halloughton Conservation Area from the Bridleway south of Halloughton (second of three in a sequence of views approaching Halloughton Conservation Area from the southwest)



Figure 16: View 15 towards the Site and Halloughton Conservation Area from the Bridleway south of Halloughton (third of three in a sequence of views approaching Halloughton Conservation Area from the southwest)



Figure 17: View 16 from within Halloughton Conservation Area, across the Grade II listed Barn at Bridle Road Farm, featuring the Site behind



Figure 18: View 17 from within the Halloughton Conservation Area featuring the eastern gable-end of the Grade II listed Barn at Bridle Road Farm, featuring the Site behind



Figure 19: View 18 toward the Site from Cotmoor Lane



Figure 20: View 19 from within Halloughton Conservation Area, featuring the Site

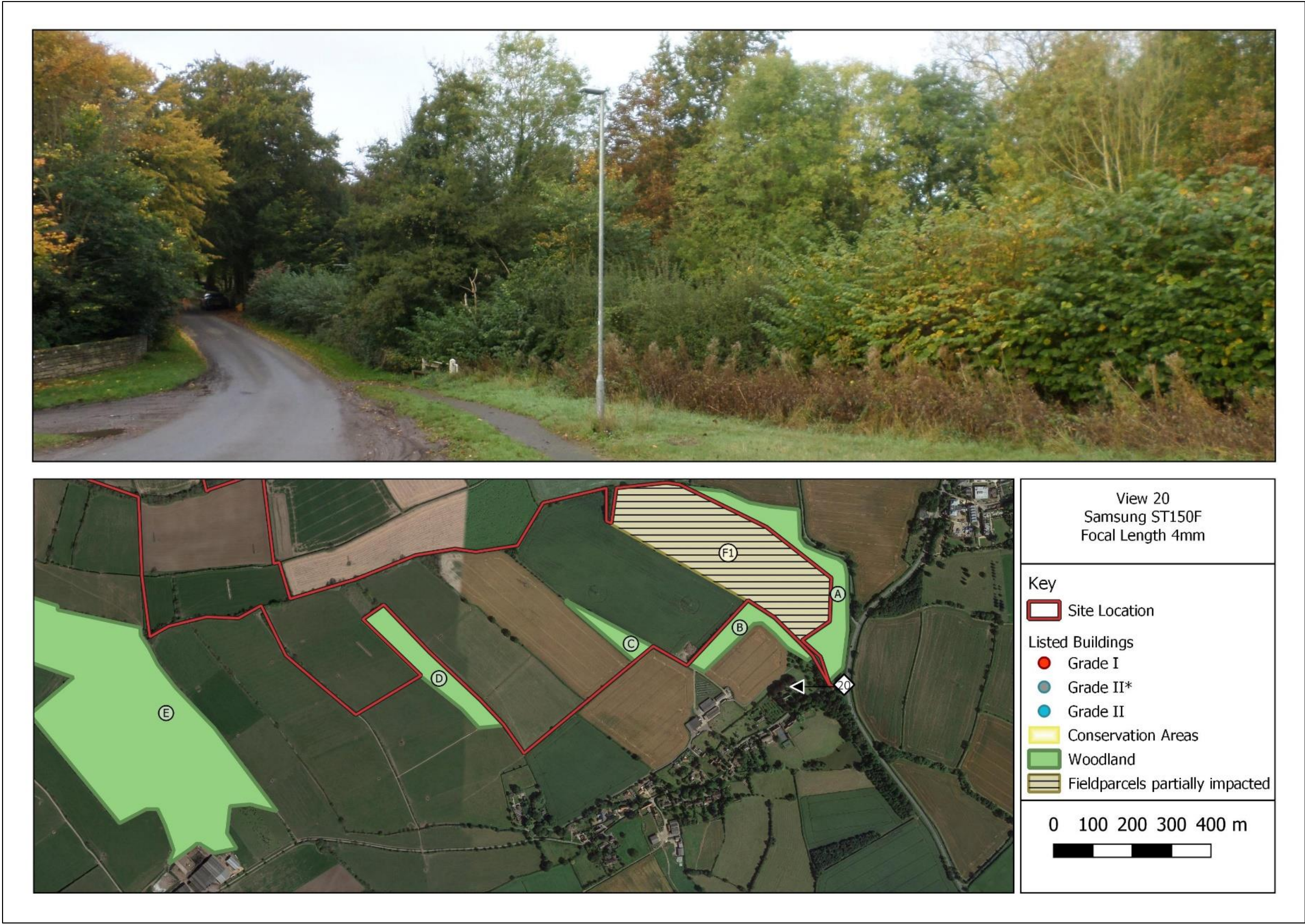


Figure 21: View 20 into Halloughton Conservation Area from the High Cross Hill junction, featuring the proposed site entrance

LOCUS

www.locusconsulting.co.uk