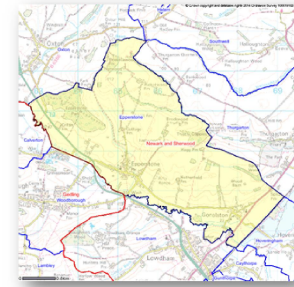


**Epperstone Parish
Census 2011
Profile**

This Parish Profile presents data from the 2011 Census which took place on 27th March 2011.

It provides comparisons against the borough, region and England averages.



	Epperstone		Newark and Sherwood	East Midlands	England
	No	%	%	%	%
USUAL RESIDENTS BY AGE BAND					
Aged 0-4	24	4.1	5.5	6.0	6.3
Aged 5-15	87	14.8	12.7	12.5	12.6
Aged 16-64	370	62.8	62.9	64.5	64.8
Aged 65+	108	18.3	19.0	17.1	16.3
TOTAL ALL USUAL RESIDENTS	589	100.0	100.0	100.0	100.0
ETHNIC GROUP					
White	579	98.3	97.5	89.3	85.4
Mixed/Multiple Ethnic Groups	9	1.5	1.0	1.9	2.3
Asian	-	0.0	0.9	6.5	7.8
Black	1	0.2	0.4	1.8	3.5
Other Ethnic Groups	-	0.0	0.1	0.6	1.0
TOTAL ALL USUAL RESIDENTS	589	100.0	100.0	100.0	100.0
RELIGION					
Christian	433	73.5	66.1	58.8	59.4
Buddhist	2	0.3	0.2	0.3	0.5
Hindu	-	-	0.2	2.0	1.5
Jewish	1	0.2	0.1	0.1	0.5
Muslim	1	0.2	0.4	3.1	5.0
Sikh	-	-	0.1	1.0	0.8
Other Religion	2	0.3	0.3	0.4	0.4
No Religion	103	17.5	25.6	27.5	24.7
Religion Not Stated	47	8.0	7.0	6.8	7.2
TOTAL ALL USUAL RESIDENTS	589	100.0	100.0	100.0	100.0
HIGHEST LEVEL OF QUALIFICATION					
No Qualifications	61	12.8	25.1	24.7	22.5
Level 1 Qualifications	41	8.6	14.3	13.9	13.3
Level 2 Qualifications	96	20.1	16.1	15.6	15.2
Apprenticeship	16	3.3	4.0	4.0	3.6
Level 3 Qualifications	55	11.5	11.9	12.9	12.4
Level 4 Qualifications and Above	188	39.3	24.2	23.6	27.4
Other Qualifications	21	4.4	4.5	5.3	5.7
All Usual Residents Aged 16 and Over	478	100.0	100.0	100.0	100.0
ECONOMIC ACTIVITY & INACTIVITY					
All Usual Residents Aged 16 to 74	437				
Economically Active Total	312	71.4	68.9	69.3	69.9
Employee, Full-time	162	37.1	38.0	38.8	38.6
Employee, Part-time	73	16.7	15.1	14.4	13.7
Self Employed	68	15.6	9.8	8.7	9.8
Unemployed	9	2.1	3.6	4.2	4.4
Full-time Student (economically active)	-	0.0	2.5	3.3	3.4
Economically Inactive Total	125	28.6	31.1	30.7	30.1
Retired	69	15.8	17.1	15.0	13.7
Student (including Full-Time Students)	20	4.6	3.8	5.8	5.8
Looking After Home or Family	18	4.1	4.1	4.0	4.4
Long-Term Sick or Disabled	15	3.4	4.3	4.1	4.0
Other	3	0.7	2.0	1.9	2.2
METHOD OF TRAVEL TO WORK					
Work Mainly at or From Home	53	12.1	4.0	3.3	3.5
Underground, Metro, Light Rail, Tram	1	0.2	0.1	0.2	2.6
Train	2	0.5	1.0	0.9	3.5
Bus, Minibus or Coach	6	1.4	1.7	4.0	4.9
Taxi	-	0.0	0.1	0.3	0.3
Motorcycle, Scooter or Moped	-	0.0	0.5	0.5	0.5
Driving a Car or Van	219	50.1	43.7	42.2	36.9
Passenger in a Car or Van	1	0.2	3.6	3.9	3.3
Bicycle	8	1.8	2.6	1.8	1.9
On Foot	12	2.7	7.2	7.1	6.9
Other Method of Travel to Work	1	0.2	0.4	0.3	0.4
Not in Employment	134	30.7	35.2	35.7	35.3
All Usual Residents Aged 16 to 74	437	100.0	100.0	100.0	100.0

	Epperstone		Newark and Sherwood	East Midlands	England
	No	%	%	%	%
HEALTH					
Very Good Health	311	52.8	44.9	45.3	47.2
Good Health	200	34.0	34.6	35.1	34.2
Fair Health	54	9.2	14.7	14.0	13.1
Bad Health	20	3.4	4.6	4.3	4.2
Very Bad Health	4	0.7	1.3	1.2	1.2
All Usual Residents	589	100.0	100.0	100.0	100.0
Long-Term Health Problem or Disability					
Day-to-Day Activities Limited a Lot	41	7.0	9.6	8.7	8.3
Day-to-Day Activities Limited a Little	51	8.7	10.8	9.9	9.3
Day-to-Day Activities Not Limited	497	84.4	79.7	81.4	82.4
All Usual Residents	589	100.0	100.0	100.0	100.0
Provision of Unpaid Care					
Provides No Unpaid Care	512	86.9	88.5	89.2	89.8
Provides 1 to 19 Hours Unpaid Care a Week	61	10.4	7.3	6.9	6.5
Provides 20 to 49 Hours Unpaid Care a Week	3	0.5	1.4	1.4	1.4
Provides 50 or More Hours Unpaid Care a Week	13	2.2	2.7	2.5	2.4
All Usual Residents	589	100.0	100.0	100.0	100.0
HOUSEHOLDS AND HOUSEHOLD SPACES					
All Household Spaces	262	100.0	100.0	100.0	100.0
Household Spaces With At Least One Usual Resident	248	94.7	95.7	96.0	95.7
Household Spaces With No Usual Residents	14	5.3	4.3	4.0	4.3
TENURE					
All occupied Households	248	100.0	100.0	100.0	100.0
Owned; Owned Outright	116	46.8	35.7	32.8	30.6
Owned; Owned with a Mortgage or Loan	75	30.2	35.0	34.5	32.8
Shared Ownership (Part Owned and Part Rented)	8	3.2	0.5	0.7	0.8
Social Rented; Rented from Council (Local Authority)	11	4.4	10.4	10.1	9.4
Social Rented; Other	4	1.6	4.0	5.7	8.3
Private Rented; Private Landlord or Letting Agency	27	10.9	11.6	13.6	15.4
Private Rented; Other	5	2.0	1.3	1.3	1.4
Living Rent Free	2	0.8	1.5	1.3	1.3
ACCOMMODATION TYPE					
All households	248	100.0	100.0	100.0	100.0
Detached	142	57.3	38.0	32.5	22.4
Semi-Detached	67	27.0	37.5	35.5	31.2
Terraced	26	10.5	16.2	20.4	24.5
Flat, Maisonette or Apartment	12	4.8	7.7	11.1	21.2
Caravan or Other Mobile or Temporary Structure	1	0.4	0.5	0.4	0.4
Shared dwellings	-	0.0	0.0	0.1	0.4
DEPRIVATION					
All Households	248	100.0	100.0	100.0	100.0
Household is Not Deprived in Any Dimension	148	59.7	43.4	42.8	42.5
Household is Deprived in 1 Dimension	72	29.0	32.5	32.4	32.7
Household is Deprived in 2 Dimensions	19	7.7	19.4	19.6	19.1
Household is Deprived in 3 Dimensions	8	3.2	4.4	4.8	5.1
Household is Deprived in 4 Dimensions	1	0.4	0.3	0.4	0.5
HOUSEHOLD SIZE					
All Household Spaces With At Least One Usual Resident	248	100.0	100.0	100.0	100.0
1 Person in Household	59	23.8	28.4	29.0	30.2
2 People in Household	105	42.3	38.1	36.2	34.2
3 People in Household	35	14.1	15.5	15.6	15.6
4 People in Household	34	13.7	12.5	12.9	13.0
5 People in Household	12	4.8	4.1	4.3	4.7
6 People in Household	2	0.8	1.1	1.4	1.7
7 People in Household	1	0.4	0.2	0.3	0.4
8 or More People in Household	-	-	0.1	0.2	0.3
CAR OR VAN AVAILABILITY					
All Households	248	100.0	100.0	100.0	100.0
No Cars or Vans in Household	13	5.2	18.6	22.1	25.8
1 Car or Van in Household	72	29.0	42.3	42.5	42.2
2 Cars or Vans in Household	114	46.0	29.7	27.4	24.7
3 Cars or Vans in Household	35	14.1	7.0	6.0	5.5
4 or More Cars or Vans in Household	14	5.6	2.3	2.0	1.9
All Cars or Vans in Area	466				

Source: Office for National Statistics licensed under the Open Government Licence v.3.0.

The data in this profile is derived from the following tables c/o Office for National Statistics Neighbourhood Statistics website and is subject to Crown Copyright.

Economic Activity, 2011 (QS601EW); Tenure, 2011 (KS402EW); Religion, 2011 (KS209EW); Accommodation Type - Households, 2011 (QS402EW); Provision of Unpaid Care, 2011 (QS301EW); Households by Deprivation Dimensions, 2011 (QS119EW); Age Structure, 2011 (KS102EW); Tenure - Households, 2011 (QS405EW); Household Size, 2011 (QS406EW); Ethnic Group, 2011 (QS201EW); Long-Term Health Problem or Disability, 2011 (QS303EW); Car or Van Availability, 2011 (QS416EW); Method of Travel to Work, 2011 (QS701EW); Household Spaces, 2011 (QS417EW); General Health, 2011 (QS302EW); Highest Level of Qualification, 2011 (QS501EW)